



NEW YORK MEDICAL COLLEGE
School of Health Sciences and Practice
—and—
INSTITUTE OF PUBLIC HEALTH

ONLINE MASTER OF PUBLIC HEALTH (MPH) IN HEALTH POLICY AND MANAGEMENT AND GRADUATE CERTIFICATES IN EMERGENCY PREPAREDNESS AND GLOBAL HEALTH



TO MOVE WITHIN THIS
COMPREHENSIVE DOCUMENT,
PLEASE USE THE FOLLOWING LINKS:

[Accreditation](#) >

[MPH In Health Policy and
Management Admission Requirements](#)>

[MPH Program of Study](#) >

[Graduate Certificate
Admission Requirements](#) >

[Emergency Preparedness
Program of Study](#) >

[Global Health
Program of Study](#) >

[Application Deadlines](#) >

[Tuition and Financial Aid](#) >

[Further Information](#) >

www.nymc.edu/shsp >

APPLY NOW >

OVERVIEW

You can now earn a high-quality accredited graduate degree or certificate from New York Medical College offered in a fully online format. Whether you are a busy professional, balancing work and family, or just interested in learning without the constraints of a campus-based program, the School's online **MPH in Health Policy and Management**, and **Emergency Preparedness and Global Health Graduate Certificate** programs are ideal for working professionals, military, and public health service personnel, people with disabilities, and human resources managers looking for new opportunities for employees. Applicants may pursue the MPH degree concurrently with the certificates (or separately).

The complex public health policies and the administrative and technological aspects of today's healthcare systems require managers and policy makers to have a broad-based education. The online program (46 credits) leading to the **MPH in Health Policy and Management** is designed to provide the student with an understanding of the business, programmatic, planning and policy areas of health care and public health. The program prepares graduates for careers in a wide range of healthcare services, public health, and research settings. An individual program plan is developed for each student based on his or her previous education, experiences, and career goals.



Both the campus-based and the online courses are taught by world class faculty – no teaching assistants are ever used. The rich learning environment features tutorials and courses with exercises, discussions, readings, projects, collaborative assignments, and faculty interaction and guidance. Communication is ongoing via e-mail, bulletin boards, and group conference rooms. Many students, who have experienced both, have reported that there is as much interaction with the professor and student peers in online classes as in the classroom.

Services available to online students include academic advising, library facilities, textbooks, and more.

The 15-credit online **Graduate Certificate in Emergency Preparedness** provides a multi-disciplinary approach to comprehensive emergency management and public health emergency preparedness for disasters, acts of terrorism, and public health emergencies. Graduates of this program get the knowledge and the skills required for emergency planning and mitigation, hazard and vulnerability analysis, and the conduct of integrated emergency management plans and drills. Students come from varied fields including public health, hospitals, emergency management, emergency medical services, fire service, or law enforcement. This certificate is preparation for the Certified Emergency Manager® examination offered by the International Association of Emergency Managers.

The 12-credit online **Graduate Certificate in Global Health** explores health care issues that exist in developing countries and multi-ethnic populations in industrialized nations. It enhances health care providers' knowledge of the health, socio-economic and political environments that affect the health status of individuals and population groups.

You can participate in courses from home, the workplace, or when traveling, while having the same access to the School of Health Sciences and Practice faculty as the on-campus students. Both the campus-based and the online courses are taught by world class faculty – no teaching assistants are ever used. The rich learning environment features tutorials and courses with exercises, discussions, readings, projects, collaborative assignments, and faculty interaction and guidance. Communication is ongoing via e-mail, bulletin boards, and group conference rooms. Many students, who have experienced both, have reported that there is as much interaction with the professor and student peers in online classes as in the classroom.

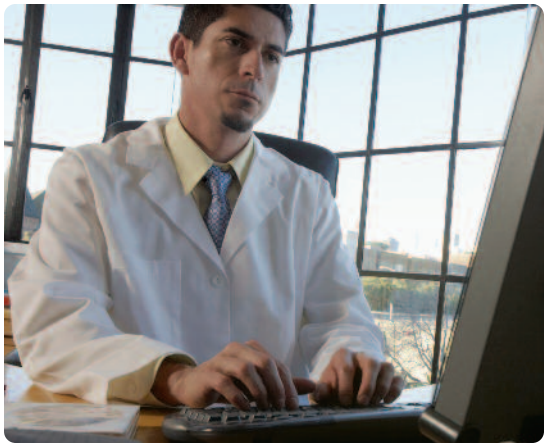
Courses conform to School of Health Sciences and Practice's standard academic calendar and classes are held in fall, spring, and summer. Services available to online students include academic advising, library facilities, textbooks, and more.

ACCREDITATION

New York Medical College is accredited by the Middle States Association of Colleges and Secondary Schools, and the public health program of the School of Health Sciences and Practice is accredited by the Council on Education for Public Health (CEPH).

ADMISSION REQUIREMENT: Online Master of Public Health in Health Policy and Management

1. A completed application form (online or hard copy);
2. A non-refundable application fee of \$50 (\$100 for international applicants);
3. A minimum overall GPA of 3.0 – the GRE is not required.



Public Health Practicum

The practicum provides a structured public health practice experience whereby students take a population-based approach to a public health problem and apply the knowledge and skills acquired. All MPH students complete the one-credit, pass/fail practicum (online students work with our practicum coordinator to identify a site in their geographic location). Fulfillment of the practicum requirement generally begins when the student has taken between 12 and 30 credits.



4. Official transcript(s) of all post-secondary course work sent directly to the School of Health Sciences and Practice;
5. Two completed Recommendations; Recommenders may complete and submit the recommendation forms online or download and mail them directly to the Admissions Office. Recommendations may be from college instructors or advisors, or a previous or current employer or work supervisor.
6. Personal Statement of approximately 250 words, indicating career and professional goals as they relate to graduate school and the program chosen;
7. Resumé.
8. International students must submit official TOEFL or IELTS scores and a transcript evaluation.

PROGRAM OF STUDY

MPH in Health Policy and Management [46 Credits]

Required core courses: 16 credits

- Health Care in the United States
- Behavioral and Social Factors in Public Health
- Environmental Influences on Human Health
- Introduction to Biostatistics
- Introduction to Epidemiology
- Practicum (1 credit)

Required concentration courses: 18 credits

- Health Economics
- Approaches to System Improvement in Healthcare Operations
- Law and Health
- Financial Administration of Health Delivery Systems
- New Directions: Managing Health Care
- Organizational Theory

Electives: 12 credits with approval of Program Advisor

Culminating Experience

- Comprehensive Examination (non-credit)

ADMISSION REQUIREMENTS FOR GRADUATE CERTIFICATES:

Students in the credit-bearing certificate programs only are considered non-matriculated.

1. Application form and fee.
2. Official transcript(s) of undergraduate (post-secondary) course work.
3. Two completed Recommendation Forms.
4. Personal Statement.



PROGRAM OF STUDY

Emergency Preparedness Graduate Certificate [15 Credits]

Applicants should have relevant initial experience in the field of emergency preparedness.

- Fundamentals of Emergency Preparedness
- Emergency Preparedness for Acts of Terrorism
- Emergency Preparedness for Natural Disasters and Complex Humanitarian Emergencies
- Public Health Emergency Preparedness
- Seminar in Applied Emergency Preparedness

Global Health Graduate Certificate [12 Credits]

- Primary Care Around the World
- Infectious Diseases and Public Health
- Comparative Healthcare Delivery Systems
- Women and Health: A Global Perspective

APPLICATION DEADLINES

Fall – August 1

Spring – December 1

Summer – May 1

TUITION

The per-credit hour rate is \$835. The MPH is a total of 46 credits and can be taken on a full-time or part-time basis.

FINANCIAL AID

Financial assistance is available for U.S. citizens and permanent residents who are matriculating students taking 6 or more credits per semester. Contact the Financial Aid Department at 914-594-4491 or see the Financial Aid Department's [website](#).



FURTHER INFORMATION

To learn more about the curriculum of the online degree and online certificate programs offered by New York Medical College School of Health Sciences and Practice, go to www.nymc.edu/shsp.

Access our distance education site to experience the online environment and sample a course at <http://nymc.mrooms.org>.

For questions call 914-594-4510 or email: shsp_online@nymc.edu.

